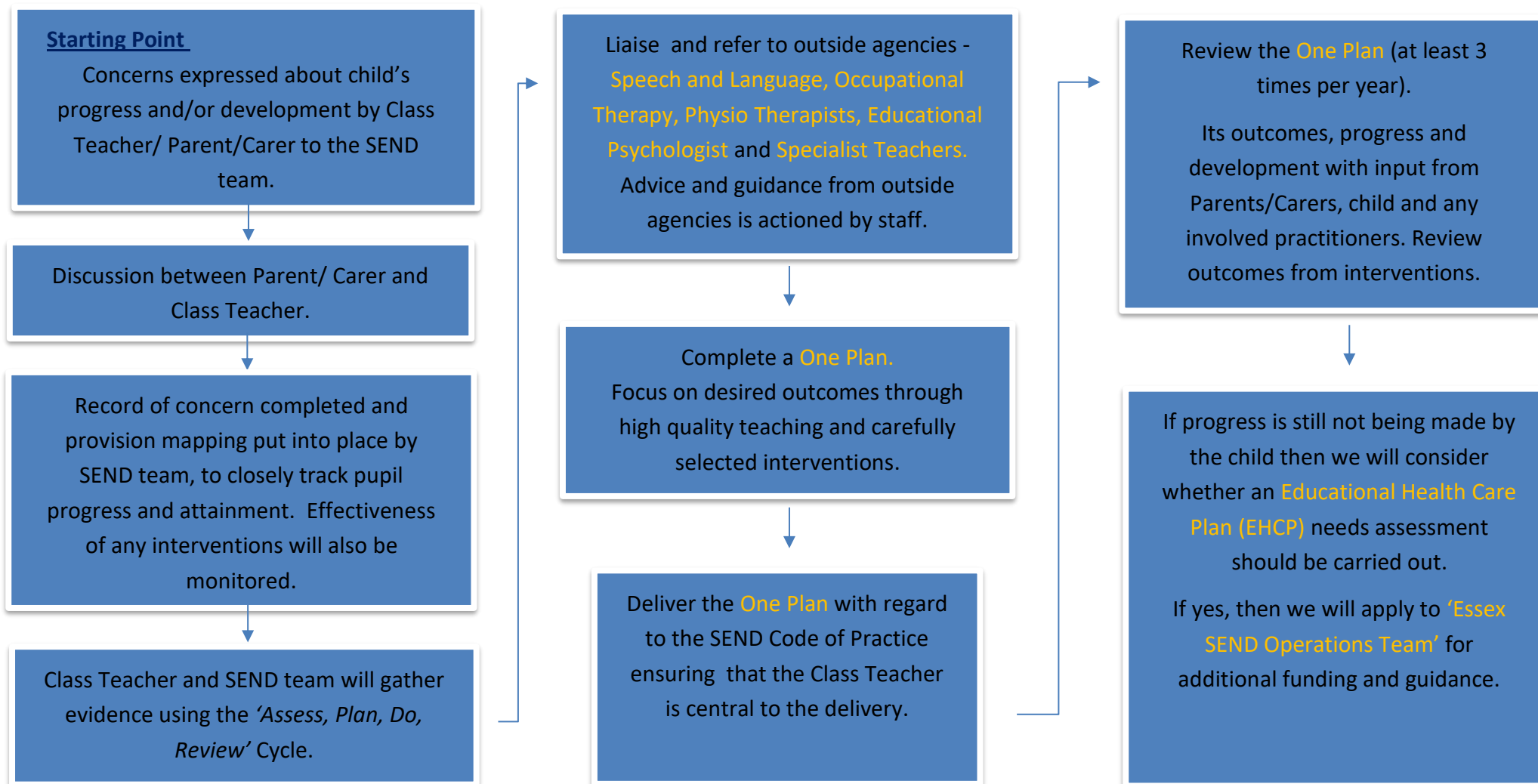




SEND FLOWCHART



Helpful Information

One Plan: In Essex, we use One Planning to follow the Special Educational Needs and Disabilities (SEND) Code of Practice.

It is a way to complete the graduated approach (assess, plan, do, review) in a person-centred way, which means that we put the child or person's needs first.

EHCP: An EHC plan is a statutory document which sets out the support a child or young person needs from all the agencies that support them (Education, Health and Social Care). The Essex Local Offer provides more information on what SEND support children and young people can get including One Support and EHC plan.

Essex SEND Operations Team: The role of the SEND Operations Team is to carry out responsibilities that are set by the government on behalf of Essex children with Special Educational Needs and Disabilities (SEND). These are outlined in the SEND Code of Practice: 0 to 25 years.